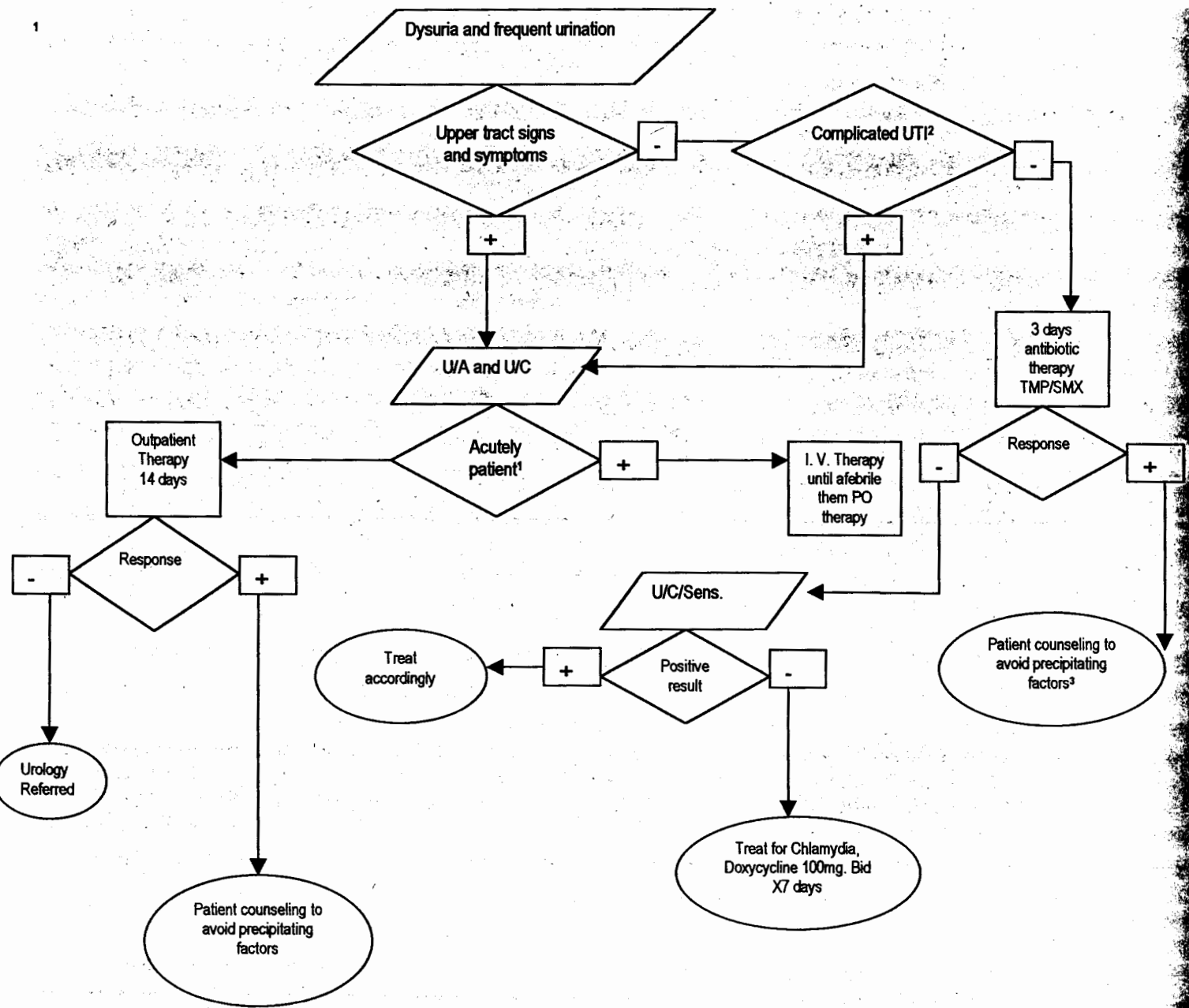


# URINARY TRAC INFECTION (ADULT WOMEN > 12 YEARS/AGE)



<sup>1</sup> Upper tract infection or acute pyelonephritis have flank, low back or abdominal pain; fever, chills, malaise, nausea and vomiting.

<sup>2</sup> Relapse, frequent re-infection catheter associated infection, abnormal urinary tract abnormal host defense, and pregnancy.

<sup>3</sup> Sexual intercourse, use of diaphragms or spermicidal ↑ risk of UTI Urination after intercourse Postcoital antibiotic therapy within 2 hours after intercourse ↓ risk of UTI.